

# SINTEC®

Feng Jing Sheng Electronics Technology Co., Ltd.

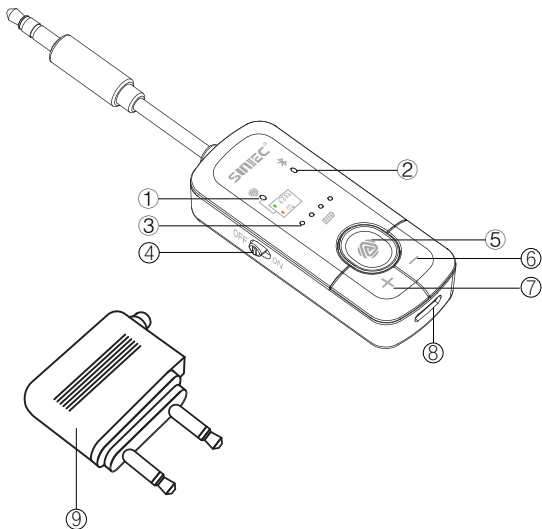
*Wireless for Living*



## **BT200R-T** Auracast Audio Transmitter

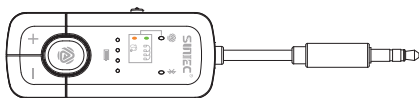
User Manual

# OVERVIEW



- |  |                        |
|--|------------------------|
| ① AURACAST LED① indicator (Orange/Green) | ⑥ Volume decrease      |
| ② Bluetooth LED② indicator (Blue)        | ⑦ Volume increase      |
| ③ Battery level indicator                | ⑧ Type-C charging port |
| ④ Power ON / OFF                         | ⑨ Dual 3.5mm Converter |
| ⑤ MF-Button                              |                        |

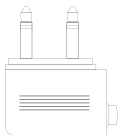
# PACKING LIST



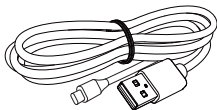
BT200R-T Auracast Audio Transmitter x 1



User Manual x 1



Dual 3.5mm Converter x 1



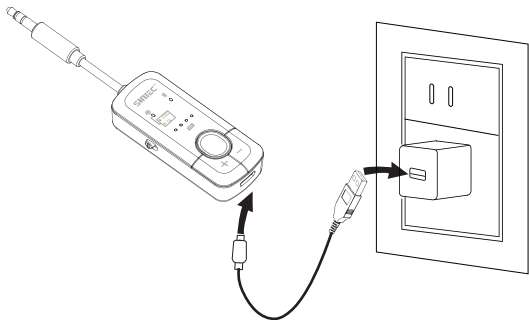
USB-C Charging Cable x 1

# HOW TO CHARGE THE TRANSMITTER ADAPTER

1.The adapter battery will be charged when connected to a PC or wall charger using supplied USB-C cable.

2.When charging the LEDs lights up sequentially flash starting from the left to right until solid white.

3.It takes approx. 2hrs to fully charge the battery.



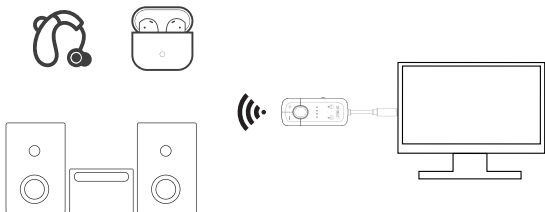
it will lighting in **white** when charging



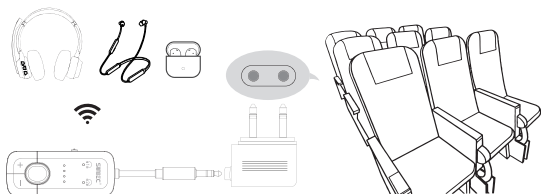
and the **white** light off when fully charged

# HOW TO CONNECT BT200R-T TO PC/TV/SPEAKER OR AIRPLANE SEAT

1. Plug BT200R-T into 3.5mm jack of TV make bluetooth audio transmit to any headset or speaker

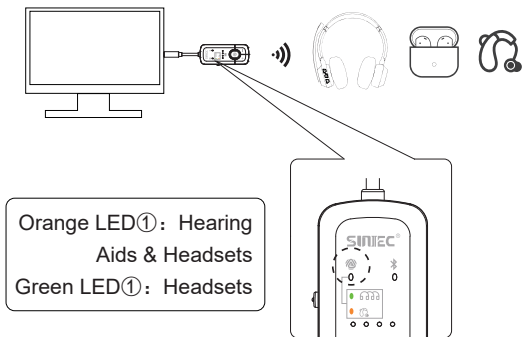


2. Connect BT200R-T to supplied airplane 3.5 mm converter and plug into dual 3.5mm jack in airplane seat to make connection with your headset for audio transfer.



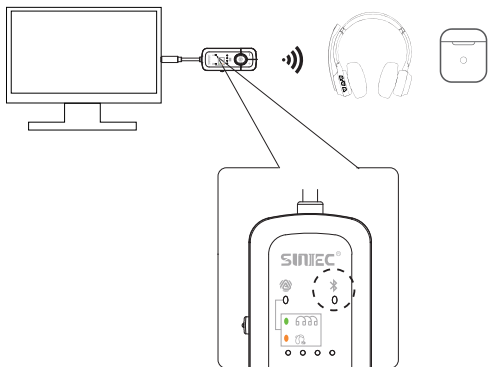
# HOW TO PAIR IN AURACAST MODE

1. Slide the power switch to ON
2. Press and hold the MF-Button for 2s to switch from the solid blue LED② to the solid orange LED① (24KHZ mode).
3. Double tap the MF-Button to change LED① from solid orange to solid green (48KHZ mode)
4. One-to-Many Connection: Once the headsets are in Auracast mode and within range, they will automatically be able to join your private audio broadcast channel.



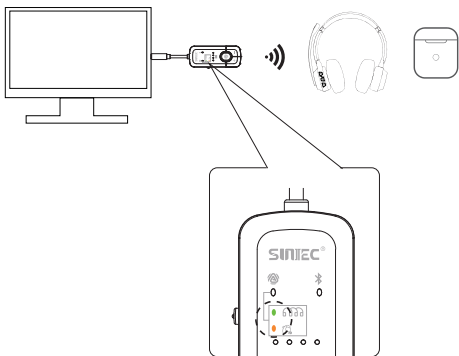
# HOW TO PAIR IN BLUETOOTH MODE

1. Press and hold MF-Button for 2s into Bluetooth mode, LED② blinks blue.
2. Double tap MF-Button into pairing mode, LED② blinks red and blue alternately
3. Put your headset into pairing mode and keep them close together for 3-6s until LED② blinks solid blue means successful paired.





## HOW TO BLUETOOTH PAIR 2ND HEADPHONES

1. After paired first headset (Bluetooth LED② flash solid blue)
2. Double tap MF-Button into pairing mode, Bluetooth LED② blinks red and blue alternately.
3. Put your headset into pairing mode and keep them close together for 3-6s until LED② blinks solid blue means successful paired.



## HOW TO USE

Button	Function	Action
	Power ON / OFF	Slide button to Power ON or OFF device
	Bluetooth & Auracast Launch Mode	Press and hold MF-Button for 2s to switch modes. Blue LED light: means Bluetooth mode Orange/Green light: means Auracast mode
	Bluetooth Pairing	Double tap MF-Button in to pairing mode, LED blinks red and blue alternately.
	Re-connection	Short press MF-Button to reconnect last-known headset in standby mode
	AURACAST Mode Sampling rate selection	Double tap MF-Button to switch Orange LED①: for Hearing Aids and headsets connection Green LED①: for headsets connection
+ / -	Volume Up	Tap once to increase volume
	Volume Down	Tap once to decrease volume
	Return to factory default setting	Press and hold MF-Button for 8s until Bluetooth LED② blinks red and blue alternately

## LED INDICATOR

LED light	Status
Bluetooth LED② blinks blue and red alternately	Power ON/Paring mode
Red LED② off	Power OFF
Solid Orange LED① on (24KHZ)	AURACAST mode Bluetooth Connected
Solid Green LED① on (48KHZ)	
Solid blue LED②	Bluetooth Connected
Bluetooth LED② blinks blue	Bluetooth disconnect & searching last-knowns device
Any of the 4 LEDs blinks white	Battery is charging
All 4 battery LEDs solid white	Battery full charged

## **FAQ:**

Q.: Why Bluetooth LED② light shows solid blue?

A.: BT200R-T will automatically connected last-knows/paired headphones after power on.

Q.: Why my headset can't connect BT200R-T audio transmitter?

A.: 90% of connection failures happen when Bluetooth on your phone is still ON, please TURN OFF the Bluetooth on any previously connected device (like your phone) before pairing.

Q: Why my headphones can't connect to Auracast?

A: 1. Make sure your headphones support Auracast and scanning is turned ON.

2.Check if the Auracast broadcast is encrypted. If broadcasts has a password unlocked it then connect directly.

Q: Why my hearing aids can't connect?

A: 1. Ensure hearing aids is newest Bluetooth V5.4 or higher, older versions won't work, also make sure Auracast scanning is ON

2.Some hearing aids need help to find the signal, please use the Auracast App on your phone to find the BT200R-T first, then your hearing aids can connect.

Q: Why there is no sound or the sound cutting out on my AirPods after connected?

A: 1.Please restart the transmitter and try connecting again  
2.If the transmitter is already connected and searching for or trying to connect to other devices at the same time may cause the sound to stutter. Please stop searching for new devices while listening.

# TECHNICAL SPECIFICATION

Bluetooth version	V5.3, QCC chipset
Bluetooth operation range	Class 2, Up to 10 meters
Auracast operation range	Up to 20meters
Operation frequency	2.402 ~ 2.480GHz
Support profiles	A2DP and AVRCP
Audio code	apt-X, aptX-HD, aptX adaptive, SBC
Battery capacity	Built-in 300mAh rechargeable li-ion battery
Charging input	DC5.0V/500mA
Charging time	Approx. 2hours
Work time	35 hours

Note: Please check your device support apt-X or aptX adaptive, if not will unable to make connection through apt-X or aptX adaptive

## WARNING

- 1 Do not place device in very low or high temperature environment, in extreme temperature environment, adapter may transform, battery capacity may decrease, transmitter adapter lifetime may be shorten.  
-----
- 2 Do not use adapter in storm, The adapter may be broken and will increase the risk of lightening stroke.  
-----
- 3 Do not disassemble or refit the adapter for any reason, it make broken of the adapter. Please send it to sales agency to repair.  
-----
- 4 Repeated charging and discharging will make the battery performance reduced after sometime, this is normal for all rechargeable batteries.  
-----
- 5 Pls put the items and accessories to the places which can not be touched by kids or pets to avoid any unexpected accidents.

No matter the product is lost, outdated, broken or you just don't like this product, please contact our customer service, we will do our best to give you a satisfactory answer.

# **DECLARATION OF CONFORMITY**

The company Sunitec Electronics Limited, declares that product BT200R-T complies with the essential requirement of the 2014/53/EU. The declaration of conformity in complete form is available at the headquarters of Sunitec Electronics Limited.

Product sold in the US and Product sold in the European community Manufactured by Sunitec Electronics Limited.


**MADE IN CHINA**

**For FAQs and more information, please visit:**



Web : [www.sunitec.net](http://www.sunitec.net)

 : [support@sunitec.net](mailto:support@sunitec.net)

 : +86-755-23770959/23770969

**SUNITEC**<sup>®</sup>

Feng Jing Sheng Electronics Technology Co., Ltd.

*Wireless for Living*

SUNITEC WIRELESS AUDIO  
TRANSMITTER  
MODEL: BT200R-T